

**KINGDOM OF CAMBODIA
NATION RELIGION KING**

**CAMBODIA AGRICULTURAL SECTOR DIVERSIFICATION PROJECT (CASDP)
ENVIRONMENTAL AND SOCIAL CODE OF PRACTICES (ESCOP) FOR**

**Laterite Road Rehabilitation Subproject
(5.6 km-Length)
In Srae Krasaing village, Srae Krasaing commune, Siembok district, Stung Treng
province.**

Name of AC: Oum Khuong Rong Roeung

**Prepared By:
Ministry of Agriculture Forestry and Fisheries (MAFF)
for Ministry of Rural Development**

April 2023

I. INTRODUCTION

1. The Ministry of Rural Development is anticipated to reconstruct 5,600 meters of laterite-paved road with DBST road. This road line in the Srae Krasaing commune, Siembok district, Stung Treng province, was chosen by the Agricultural Cooperative (AC) of Oum Khuong Rong Roeung. The report was created to ensure that projects financed by the World Bank have no negative environmental and social impacts during and after implementation.

2. To manage and mitigate potential negative environmental impacts, all the road implementation activities will adhere to Environmental Codes of Practice, as summarized in the report (ECoPs). The ECoPs include specific, detailed, and measurable measures to mitigate the potential impacts of each type of eligible/specified project activity. It is designed to ensure that all potential environmental impacts resulting from the construction and operation phases of the subproject will not negatively affect the community and the environment. And the AC Oum Khuong Rong Roeung Agricultural Cooperative has selected to rehabilitate existing road lines under the following subproject (AC), some drainage infrastructure, some of which are listed below, will be replaced as part of the road rehabilitation activities.

- **Upgrade 5.6 kilometers of Laterite paved road to DBST road with a 6-meter width.**
- Installation of 8 New Pipes Curvet Size: 1@1000 with each length is 8 meters.

3. This road connects Srae Krasaing village in Srae Krasaing commune to Damrie Phong village in Koh Sampey commune in Siem Bok district, Stung Treng province, and also connects to National Road No. 7. According to a survey conducted by the Ministry of Rural Development, the width of both roads' ranges between 6 and 12 meters at present. During the rainy season, most of the road is impassable because it is muddy and flooded. The road reduces travel time and contributes to the improvement of socioeconomic conditions in these communities through its rehabilitation. It was also mentioned that this laterite road has a negative impact on the environment during the dry season, as it creates dusty conditions for the villagers who live along its edges. Residents living near the road have therefore petitioned the commune officials to repair the road. On the map below, the locations of the road and the Agriculture Cooperative are marked.

Figure 1: Map of road sub project location

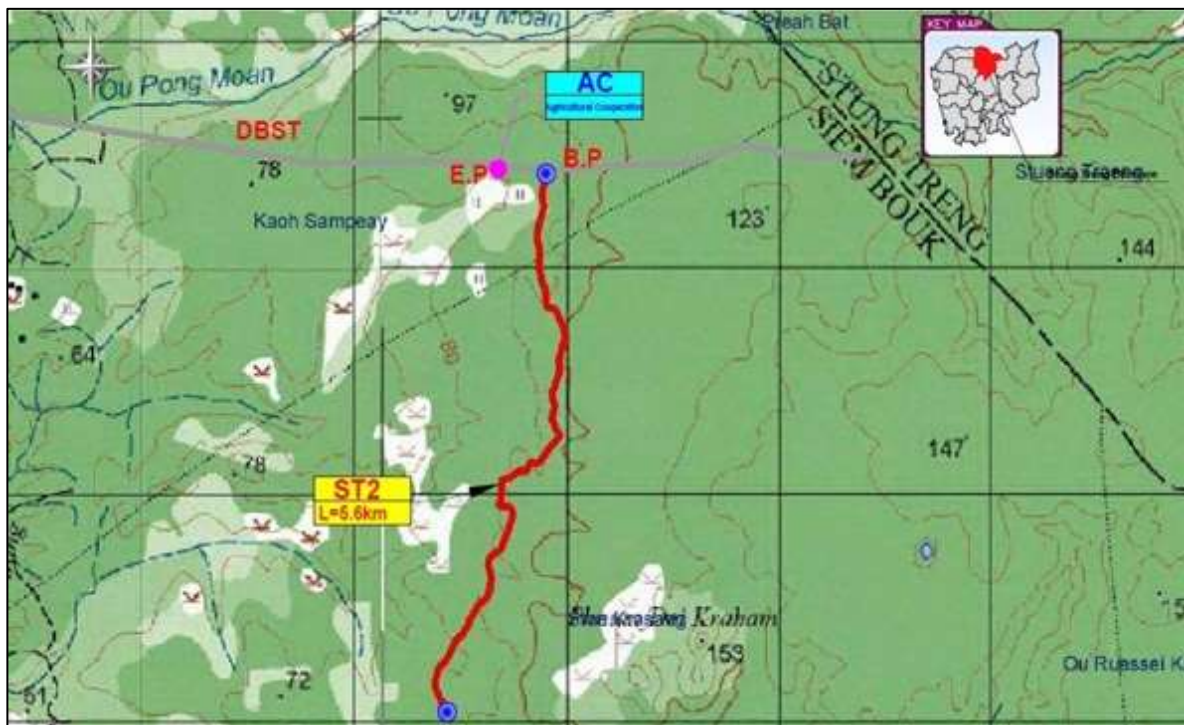
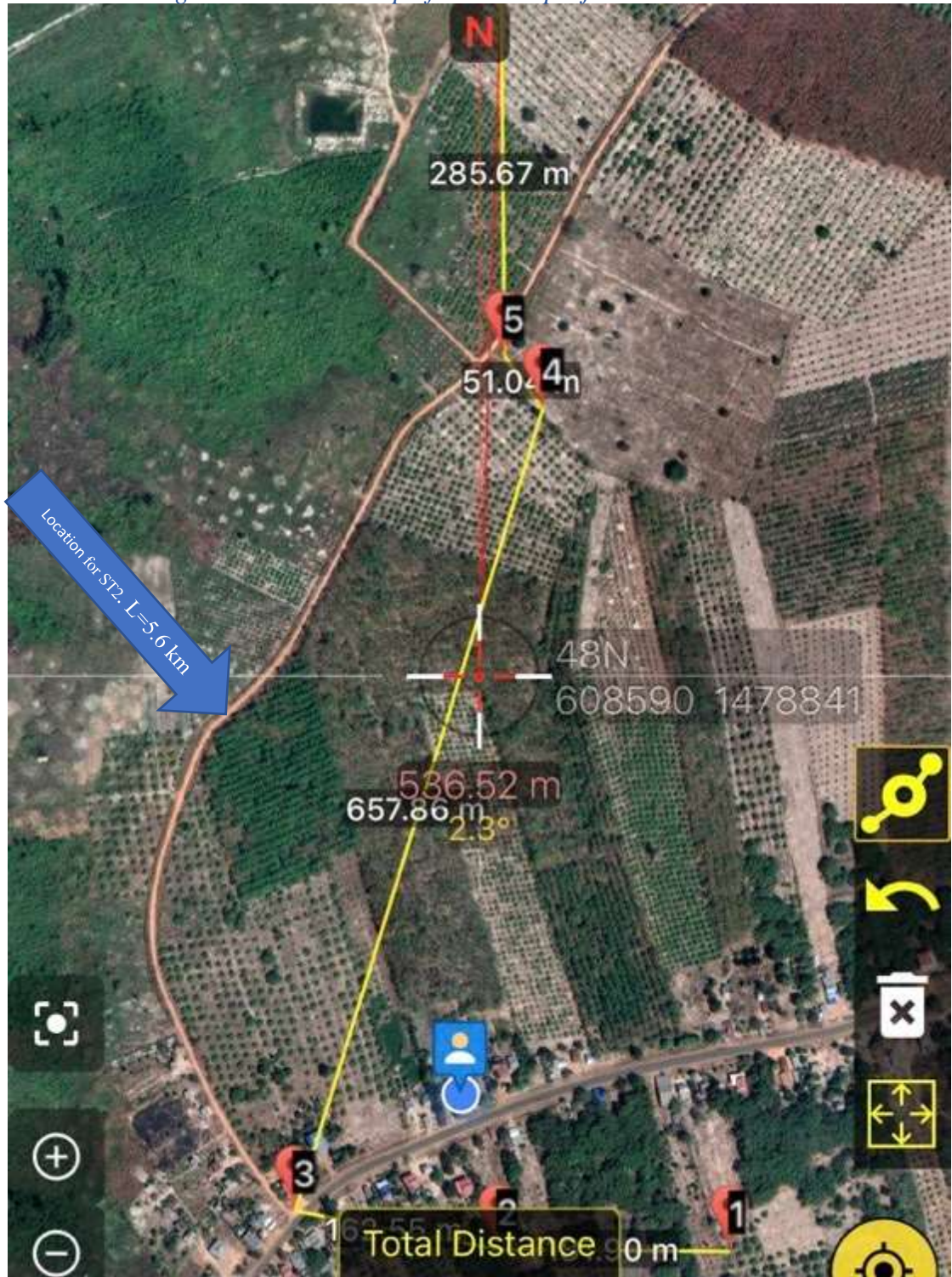


Figure 2: Satellite Map of road sub project location



II. OBJECTIVES

4. This Environmental Codes of Practice (ECOP) is prepared to manage small environmental impacts during construction. The ECOPs will apply to manage small scale infrastructure investments subproject. ECOP will be a mandatory part of construction contract or bidding documents so that contractor complies with environmental covenants. MAFF and the concerned ministries (PTs) and construction supervisors will be responsible for monitoring of compliance with ECOP and preparing the required reports.

III. RESPONSIBILITIES

5. The Contractors are the key entities responsible for the effective implementation of this ESCOP during the periods of this subproject. The key responsibilities of MRD and the concerned ministries (PTs) and the Contractor are as follows:

MRD and the concerned ministries (PTs)

6. The MRD assigned the following staffs and specialists to carry out environmental and social impact mitigation throughout the subproject implementation phases.

- Mrs. Mey Mithona, Social Safeguards Focal Point
- Mr. Puthy Lem, Indigenous Peoples Safeguards Focal Point
- Mrs. Chantha Thou, Environmental Safeguards Focal Point
- Mr. Hong Sophea, Environmental Specialist
- Mr. Te Rithy, Social Safeguards Specialist

7. The mentioned specialists will ensure that the following activities take place; (a) the Contractor' compliance with the environmental plan, (b) taking remedial actions in the event of non-compliance and/or adverse impacts occur, (c) investigating complaints, evaluating, and identifying corrective measures; (d) environmental enhancement, public awareness, and proactive pollution reduction methods; and (e) contractors' activity in responding to complaints.

Contractor

8. Contractor is responsible carrying out for Road construction activities and informing MRD and the concerned ministries (PTs), local authorities and community about progress of the implementation activities as presented in BPI and risks associated with any Road construction activities. As such, Contractor is responsible for implementing agreed measures to mitigate environmental and social risks associated with the civil works/activities carried out by the members or by a Contractor.

- Contractor is required to obey other national relevant legal regulations and laws.

IV. GENERAL ENVIRONMENTAL AND SOCIAL CODE OF PRACTICES

9. Environmental and Social Codes of Practice (ESCOP) are established for the rehabilitation of road line (5.6 km of Laterite) selected by AC Oum Khuong Rong Roeung in Srae Krasaing commune, Siembok district, Stung Treng province. The ESCOP is implemented using the procedures listed in the table below. The ESCOP also includes routine systemic checks to ensure that all specified mitigations are in place.

Section A. General ESCOPs for Construction Activities **PART 1 - CONTRATOR RESPONSIBILITIES**

10. ESCOP will consist of routine systematic checking that all mitigations specified in the following table that are effectively implemented during the relevant periods of the project. Detailed ESCOP is shown in Table 1 for relevant periods of the project

Table-1; Environmental Prevention/Mitigation Measures

Issue	Environmental Prevention/Mitigation Measures
1. Occupational Health and Safety	<ul style="list-style-type: none"> - Contractors shall conduct site specific OHS risk assessments based on outcomes OHS management plans in line with the local legal requirements and WBG EHS guidelines. - Set up the construction site with sufficient supplies of clean drinking water, power, and sanitation facilities. - Mandate the use of personal protective equipment for workers as necessary (gloves, dust masks, hard hats, boots, goggles, eye, and hearing protection). - Follow the below measures for construction involving work at height (e.g. 2 meters above ground). (i) Do as much work as possible from the ground. (ii) Only allow people with sufficient skills, knowledge, and experience to perform the task. Ensure that proper training and equipment for working at heights is provided. - Take precautions when working on or near fragile surfaces. - Clean up oil, grease, paint, and dirt immediately to prevent slipping and possible injury. - Where possible provide fall-protection measures e.g. safety harness, simple scaffolding/guard rail for works over 4 meters from ground. - Keep worksite clean and free of debris on daily basis. - Provision of first aid kit with bandages, alcohol or non-alcohol antiseptic wipes, dressings, etc. at the construction site. - Keep corrosive fluids and other toxic materials in properly sealed containers for collection and disposal in properly secured areas. - Ensure adequate toilet facilities for workers, at least one toilet compartment for every 25 workers, with separate facilities for males and females. - Ensure structural openings are covered/protected adequately. - Secure loose or light material that is stored on roofs or open floors. - During heavy rains or emergencies of any kind, suspend all work. - Apply electricity good practices such as use of safe extension cords, voltage regulators and circuit breakers, labels on electrical wiring for safety measures, awareness on identifying burning smell from wires, etc. at construction sites and provision of voltage detectors, multi-meters and receptacle testers as per necessary. - Make sure workers are aware of GRM and can access it.

Issue	Environmental Prevention/Mitigation Measures
2. Dust Generation / Air Quality	<ul style="list-style-type: none"> - Minimize dust from exposed work sites by applying water on the ground and roadways regularly during dry season. - Avoid burn site clearance debris (trees, undergrowth) or construction waste materials. - Keep stockpile of aggregate/sand materials covered to avoid suspension or dispersal of fine soil particles during windy days or disturbance from stray animals. - Reduce the operation hours of generators /machines /equipment /vehicles as much as possible. - Regular maintenance of generators/machines/equipment/vehicles. - Control vehicle speed when driving through community areas is unavoidable so that dust dispersion from vehicle transport is minimized. - water dusty roads and construction sites. - <i>The Contractor implement dust control measures to ensure that the generation of dust is minimized and is not perceived as a nuisance by local residents, maintain a safe working environment, such as:</i> <ul style="list-style-type: none"> ▪ <i>water dusty roads and construction sites;</i> ▪ <i>covering of material stockpiles;</i> ▪ <i>Material loads covered and secured during transportation to prevent the scattering of soil, sand, materials, or dust;</i> ▪ <i>Exposed soil and material stockpiles shall be protected against wind erosion.</i>
3. Water Quality and Availability	<ul style="list-style-type: none"> - Activities should not affect the availability of water for drinking and hygienic purposes. - No soiled materials, solid wastes, toxic or hazardous materials should be poured or thrown into water bodies for dilution or disposal. - Provision of toilets with a temporary septic tank at construction site. - The flow of natural waters should not be obstructed or diverted to another direction, which may lead to drying up of riverbeds or flooding of settlements. - Separate as best as possible concrete works in waterways and keep concrete mixing separate from drainage leading to waterways. - Portable or constructed toilets must be provided on site for construction workers. Wastewater from toilets as well as kitchens, showers, sinks, etc. shall be discharged into a conservancy tank for removal from the site or discharged into municipal sewerage systems; there should be no direct discharges to any water body. - Wastewater over permissible values set by relevant national technical standards/regulations must be collected in a conservancy tank and removed from site by licensed waste collectors. - At completion of construction works, water collection tanks and septic tanks shall be covered and effectively sealed off.
4. Noise	<ul style="list-style-type: none"> - Plan activities in consultation with people living in the immediate vicinity so that noisiest activities are undertaken during periods that will result in least disturbance. - Use noise-control methods such as fences, barriers, etc. - Minimize project transportation through community areas where possible. - Maintain a buffer zone (such as open spaces, row of trees or vegetated areas) between the project site and residential areas to lessen the impact of noise to the living quarters. - Avoid doing construction works at night-time. - All vehicles must have appropriate “Certificate of conformity from inspection of quality, technical safety and environmental protection “following Decision No. 35/2005/QD-BGTVT; to avoid exceeding noise emission from poorly maintained machines

Issue	Environmental Prevention/Mitigation Measures
5. Drainage and sedimentation	<ul style="list-style-type: none"> - The Contractor shall follow the detailed drainage design included in the construction plans, to ensure drainage system is always maintained cleared of mud and other obstructions. - Areas of the site not disturbed by construction activities shall be maintained in their existing conditions.
6. Solid waste	<ul style="list-style-type: none"> - At all places of work, the Contractor shall provide litter bins, containers and refuse collection facilities. - Solid waste may be temporarily stored on site in a designated area approved by the Construction Supervision Consultant and relevant local authorities prior to collection and disposal. - Waste storage containers shall be covered, tip-proof, weatherproof and scavenger proof. - No burning, on-site burying or dumping of solid waste shall occur. - Recyclable materials such as wooden plates for trench works, steel, scaffolding material, site holding, packaging material, etc. shall be collected and separated on-site from other waste sources for reuse, for use as fill, or for sale. - If not removed off site, solid waste or construction debris shall be disposed of only at sites identified and approved by the Construction Supervision Consultant and included in the solid waste plan. Under no circumstances shall the contractor dispose of any material in environmentally sensitive areas, such as in areas of natural habitat or in watercourses.
6. Soil Erosion	<ul style="list-style-type: none"> - Schedule construction activities during dry season as much as possible. - Contour and minimize length and steepness of slopes if any. - Use mulch, grasses or compacted soil to stabilize exposed areas. - Cover with topsoil and re-vegetate (plant grass, fast-growing plants/trees) construction areas quickly once work is completed.
7. Chemical or Hazardous and Non-hazardous Waste	<ul style="list-style-type: none"> - Segregate construction waste as recyclable, hazardous and non-hazardous waste. - Collect, store and transport construction waste to appropriately designated/ controlled dump sites. - On-site storage of wastes prior to final disposal (including earth dug for foundations) should be at least 50 meters from rivers, streams, lakes, and wetlands. - Use secured area for refueling and transfer of other toxic fluids distant from settlement area (and at least 50 meters from drainage structures and from important water bodies); ideally on a hard/non-porous surface. - Store fuels, oils and chemicals safely in areas with impermeable ground with roads and surrounding banks. - Train workers on correct transfer and handling of fuels and other substances and require the use of gloves, boots, aprons, eyewear, and other protective equipment for protection in handling highly hazardous materials. - Collect and properly dispose of small amount of maintenance materials such as oily rags, oil filters, used oil, etc. Never dispose spent oils on the ground and in water courses as it can contaminate soil and groundwater (including drinking water aquifer). - After each construction site is decommissioned, all debris and waste shall be cleared. - Used oil and grease shall be removed from site and sold to an approved used oil recycling company. - Used oil, lubricants, cleaning materials, etc. from the maintenance of vehicles and machinery shall be collected in holding tanks and removed from site by a specialized oil recycling company for disposal at an approved hazardous waste site. - Unused or rejected tar or bituminous products shall be returned to the supplier's production plant. - Store chemicals in safe manner, such as roofing, fenced and appropriate labeling.

Issue	Environmental Prevention/Mitigation Measures
8. Disruption of vegetative cover and ecological resources	<ul style="list-style-type: none"> - Areas to be cleared should be minimized as much as possible. - The Contractor shall remove topsoil from all areas where topsoil will be impacted on by rehabilitation activities, including temporary activities such as storage and stockpiling, etc.; the stripped topsoil shall be stockpiled in areas agreed with the Construction Supervision Consultant for later use in re-vegetation and shall be adequately protected. - The application of chemicals for vegetation clearing is not permitted. - Prohibit cutting of any tree unless explicitly authorized in the vegetation clearing plan. - When needed, erect temporary protective fencing to efficiently protect the preserved trees before commencement of any works within the site. - The Contractor shall ensure that no hunting, trapping shooting, poisoning of fauna takes place.
9. Traffic management	<ul style="list-style-type: none"> - Before construction, carry out consultations with local government and community and with traffic police. - Significant increases in number of vehicle trips must be covered in a construction plan previously approved. Routing, especially of heavy vehicles, needs to take into account sensitive sites such as schools, hospitals, and markets. - Installation of lighting at night must be done if this is necessary to ensure safe traffic circulation. - Place signs around the construction areas to facilitate traffic movement, provide directions to various components of the works, and provide safety advice and warning. - Employing safe traffic control measures, including road/rivers/canal signs and flag persons to warn of dangerous conditions. - Avoid material transportation for construction during rush hour. - Signpost shall be installed appropriately in both water-ways and roads where necessary.
10. Interruption of utility services	<ul style="list-style-type: none"> - the contractor shall coordinate with local authorities (leaders of local communes, leader of villages) for agreed schedules of construction activities at areas nearby sensitive places or at sensitive times (e.g., religious festival days). - Disseminate project information to affected parties (for example local authority, enterprises and affected households, etc.) through community meetings before construction commencement. - Provide a community relations contact from whom interested parties can receive information on site activities, project status and project implementation results. - Inform local residents about construction and work schedules, interruption of services, traffic detour routes and provisional bus routes, blasting and demolition, as appropriate. - Notification boards shall be erected at all construction sites providing information about the project, as well as contact information about the site managers, environmental staff, health and safety staff, telephone numbers and other contact information so that any affected people can have the channel to voice their concerns and suggestions.

Issue	Environmental Prevention/Mitigation Measures
11. Chance find procedures	<p>If the Contractor discovers archeological sites, historical sites, remains and objects, including graveyards and/or individual graves during excavation or construction, the Contractor shall:</p> <ul style="list-style-type: none"> - Stop the construction activities in the area of the chance find; - Delineate the discovered site or area; - Secure the site to prevent any damage or loss of removable objects. In cases of removable antiquities or sensitive remains, a night guard shall be arranged until the responsible local authorities or the Department of Culture and Information takes over; - Notify the Construction Supervision Consultant who in turn will notify responsible local or national authorities in charge of the Cultural Property (within 24 hours or less); - Relevant local or national authorities would be in charge of protecting and preserving the site before deciding on subsequent appropriate procedures. This would require a preliminary evaluation of the findings to be performed. The significance and importance of the findings should be assessed according to the various criteria relevant to cultural heritage; those include the aesthetic, historic, scientific or research, social and economic values; - Decisions on how to handle the finding shall be taken by the responsible authorities. This could include changes in the layout (such as when finding an irremovable remain of cultural or archeological importance) conservation, preservation, restoration and salvage; - If the cultural sites and/or relics are of high value and site preservation is recommended by the professionals and required by the cultural relics authority, the Project's Owner will need to make necessary design changes to accommodate the request and preserve the site; - Decisions concerning the management of the finding shall be communicated in writing by relevant authorities; - Construction works could resume only after permission is granted from the responsible local authorities concerning safeguard of the heritage.
12. Community Health and Safety	<ul style="list-style-type: none"> - Rope off construction area and secure materials stockpiles/ storage areas from the public and display warning signs including at unsafe locations. - Do not allow children to play in and around construction areas. - If school children are in the vicinity, include traffic safety personnel to direct traffic during school hours, if needed. - Control driving speed of vehicles particularly when passing through community or nearby school, health center or other sensitive areas. - Fill in all earth borrow-pits once construction is completed to avoid standing water, water-borne diseases, and possible drowning. - Avoid occurring labor influx around construction sites. - Avoid working at night. - Recommend hiring construction labor from nearby communities. - Inform communities on the gender-based violence policy (GBV). - Make sure that the community is aware of GRM and can access it.
13. Worker Code of Conduct	<ul style="list-style-type: none"> - Provide training to workers on code of conduct. - Ensure all workers have read and agreed to the code of conduct and have signed it.
14. Cultural Heritage	<ul style="list-style-type: none"> - No disturbance of cultural or historic sites. - If any archaeological site, historical site, remains, or objects are found during excavation or construction, chance find procedures shall proceed immediately.

Issue	Environmental Prevention/Mitigation Measures
15. To prevent outbreak of Covid-19 at working area as well as to local community	<ul style="list-style-type: none"> - Clean your hands often, use soap and water or an alcohol-based hand rub. - Maintain and safe distance from anyone who is coughing or sneezing. - Don't touch your eyes, nose or mouth. - Cover your nose and mouth with your bent elbow or a tissue when you cough with your bent. - Stay home if you feel unwell. - If you have a fever, cough and difficulty breathing, seek medical attention, Call in advance. - Follow the directions of the local health authority. - Measurement of Pandemic Covid-19 material: Masks, Alcohol for hand sanitizer. - Measurement of Pandemic Covid-19 material: LCD digital temperature Measurement
16. Other	<ul style="list-style-type: none"> - No cutting of trees or destruction of vegetation other than on construction site. - If any cutting down of trees for land clearance of the construction site, at least the same number of trees should be compensated to plant in other available area. - No hunting, fishing, capture of wildlife or collection of plants. - No use of unapproved toxic materials including lead-based paints, un-bonded asbestos, etc.

11. The following table will generally introduce the Environmental and Social Code of Practices for identified for of Laterite Road Rehabilitation (5.6Km Length) that proposed by AC Oum Khuong Rong Roeng.

Table-2; Contractor's Workers Environmental Code of Conducts


DO	DO NOT
<ul style="list-style-type: none"> - At the end of temporary works, remove all kinds of materials and rubbish from road construction site and store in properly place. - Use the toilet facility provided report dirty or full facilities. - On completion of each construction activities at the site must be left clean and free from all debris, hydrocarbons, and waste to the satisfaction of the Engineer/Workers. - Prevent pollution of water sources and soil. - CAREFULLY. (Littering is an offence.) - Smoke in designations areas only and dispose of cigarettes and matches carefully. (Littering is an offence) - Use all safety equipment and comply with all safety procedures. - Measures are taken to avoid any nuisance or disturbance arising from the execution of construction works and their related activities. 	<ul style="list-style-type: none"> - Remove or damage vegetation without direct instruction. - Poach, injure, rap, feed or harm any animals (Includes birds and snakes, etc) - Wash cars or machinery in streams or creek - Driver cars or machine reckless or above speed limit. - Allow waste, liter, oils, or foreign materials into the stream. - Cut trees for any reason outside the approved construction area. - Use of alcohol by the worker during work hours. - Wash cares or machinery in stream or creek - Do any maintenance (Change of oils and filters) of cares and equipment outside authorized) - Spill potential pollution, such as petroleum products. - Buy any wild animals for food. - Use latrines outside the designated facilities and burn wastes and or cleared vegetation. - Maintenance (Change of oils and filters) of cars and equipment outside authorized areas

<ul style="list-style-type: none"> - Regular disposal of rubbish off site at an appropriate location. - At all completion of the works the whole site including any construction site or storage areas shall be cleaned up. - Report any spills or oil immediately and stop spills. - During daytime construction, the contractor will ensure that temporary anti-noise barriers will be installed to shield any schools or residences within 100m of the construction site. - Use all safe equipment and follow safety procedures. - Comply with the communicable Disease Control Department of the Ministry of Health on Covid-19 regulations and policies to protect themselves from Covid-19 and prevent the spreading of this virus. - No sexual exploitation, sexual abuse, or harassment (SEA/SH). 	<ul style="list-style-type: none"> - Dispose trash in unauthorized places work without safety equipment (including boots and helmets) - Not any damages to private properties occur during the construction period. - Do not set up site location at unexploded ordnance (UXO), - Make any fires in construction site. - No Exploitation of child labor. - Sexual abuse and disrespect for gender rights. - Cut/remove trees if not really needed. - Heavy equipment cannot park on the roadside.
--	---

Annex 1: Environmental Due Diligence Form

This site-specific safeguard due diligence shall be conducted to evaluate environmental impacts of all activity activities which will be implemented at one location under each activity.

Section 1- Subproject Details

Component No.	Component 2	
Title of Subproject	Laterite Road Rehabilitation with the Length of 5.60Km in Agricultural Cooperative's Umkhong Rungreung located in Srae Krasang Commune, Siem Bouk District, Stung Treng Province	
Name of Implementation Agency	Agricultural Cooperative Umkhong Rungreung located in Srae Krasang Commune, Siem Bouk District, Stung Treng Province	
Contact information of the subproject proponent	Name: Mr. Ngin Nareth	Position: Chief of Agricultural Cooperative
	Phone: +855 88 737 5663	Email: N/A Telgram: +855 88 737 5663
Project Location	Srae Krasang and Kaoh Sampeay Commune City: Siem Bouk District	Province/Region: Stung Treng Province, Cambodia.
	Coordinates: N= 11.1749683 E= 104.6730536 Please provide the KML/KMZ file in google map as well.	
Photos to be provided	1. Google map photos of the project location	
		
	2. The proposed project location and the surroundings areas especially on those of sensitive receptors (eg. Hospitals, monastery, schools, house for aged people etc.,).	
	The road rehabilitation will be minor affected by sensitive receptors surrounding place, such as, some trees, they have willing to voluntary donation to project.	
Subproject Activities in the above-mentioned location	Road: <input type="checkbox"/> New <input checked="" type="checkbox"/> Rehabilitation of existing road Existing road width (km): 7:00m Proposed road length and width (km): The length is 5.50km and width is 8.00m Proposed road type: Laterite Road Rehabilitation type: Laterite paving road rehabilitation (Widening or just paving etc.,)	Construction: <input type="checkbox"/> Building/any small infrastructures (ponds, farm drains, tube wells, dry storage, cold storage, warehouse etc.,) <input type="checkbox"/> Farming/Livestock raising associated Facility (fish farm, pig raising farm, bio gas etc.,) <input type="checkbox"/> Irrigation schemes/ channels <input type="checkbox"/> Other (please mention) (Renovation of Regional Animal Health Laboratory Building)

Elaborate more in detail about the above-mentioned activity	There is detail activity as below: Mobilization of Contractor's staffs and labors to site, Site Camp, toilet preparation with electrician water supply, Site cleaning after completed works, Bush and shrub clearing at sub project output location by removing of top soil, Soil cost and excavation for road embankment after compacted, Soil backfill and fill for road embankment with watering and compaction.
Expected construction commencement (starting) Date	The expectation of road rehabilitation date would be started on July 2023.

Section 2- Environmental Issues

Will the proposed subproject:		Yes	No	Explanation (pls write explanation if the answer is Yes)
1	<u>Fall under category A as defined in the project ESMF? (pls refer to table 1, Annex 2.2 of the ESMF)</u>		No	
2	<u>Resource Use</u> Require a large amount of energy, water or other natural resources (eg. Wood fire, charcoal, etc..) during project construction or operation?		No	Crushed Rock Quarry are available to middle of road line is 33.86km and the quarry is located by UTM WGS84-48N at 608614.00 East and 1494025.00 North. The borrow-pit of laterite are available 5.93km from the middle of road line. The borrow-pit is located by UTM WGS84-48N at 611266.30 East and 1479372.00 North.
3	<u>Water Use</u> Extract or use ground or surface water resources, leading to reduction in the volume and the quality of water available for the public water supply?		No	
4	<u>Water Quality</u> Cause pollution to ground or surface water, via direct or indirect discharges or seepages, or through interception of an aquifer by drilling, trenching or excavation?		No	
5	<u>Soil Quality</u> Create a risk of increased soil degradation, soil erosion or increase in soil salinity?	Yes		The earthworks for the sub-project activities might cause minor negative impacts in form of erosion on road shoulder
6	<u>Sensitive Receptors</u> Be located adjacent to a sensitive receptors and area (e.g. school, hospital or medical facility, river crossings, forests, monastery, meditation center etc..)? If there is any, provide detail locations and photos. (Note: If any of the sensitive receptors are located adjacent/near to the proposed subproject's activity, this subproject may need to develop a site specific ESMP rather than using the ECOP.		No	
7	<u>Air Quality</u> Lead to increased levels of harmful air emissions including dust?	Yes		During road rehabilitation, dust could be impacted to villagers, so workers have to watering the road once or twice a day.
8	<u>Noise</u>	Yes		Some part of the road rehabilitation nearby village

Will the proposed subproject:		Yes	No	Explanation (pls write explanation if the answer is Yes)
	increase the noise levels leading to non-compliance with national and WHO/WBG guideline for noise?			it could be impacted to villagers by noise, so the machinery workers have to use the regulation of noise pollution and respect to the relaxing time of villager.
9	<u>Waste Generation</u> Generate solid or liquid waste that could adversely impact soils, vegetation, rivers, streams or groundwater?	Yes		During road rehabilitation activities it could be Impact on the soil quality and ground by oil spilled from machinery construction, the worker should collect dirty soil with oil from the construction site and store in the safe place, and take it to the landfill.
10	<u>Hazardous Waste Management</u> Will hazardous waste such chemicals container and packaging etc., be generated during construction or operation?	Yes		All hazardous waste shall be disposed of at an approved hazardous landfill site.
11	<u>Wastewater Management</u> Is there any potential release of contaminated wastewater from the project funded facilities and associated facilities during the operation period?	Yes		The constructor should provide facility temporary toilet to the workers to be avoid from contaminated wastewater from the project site, as well as, wasted water from domestic use and toilet, and unmanaged wasted water could be polluted the environment and impacted health safety of the worker and community household.
12	<u>Tree cutting and vegetation clearance</u> Will the project involve tree cuttings? If yes, how many in approximate?	Yes		There are approximately 167 cashew nut trees from the 20 households will be affected.

Section 3 – Health and Safety issues

Will the activity or any of its associated activities?		Yes	No	Explanation
1	<u>Natural Disasters</u> Be susceptible to or lead to increased vulnerability to earthquakes, flood/river cutting, flooding to low lying area?		No	
2	<u>Climate Change</u> Lead to climate change impacts or conversely be susceptible to impacts resulting from climate change?		No	
3	<u>GHG Emission</u> Result in significant increases in local or regional Green House Gas (GHG) Emissions?		No	
4	<u>Occupational Health and Safety</u> Have an adverse impact upon the health and safety of the workers/ employees?		No	
5	<u>Community Health and Safety</u> Increase exposure of the community to communicable disease (such as COVID-19, HIV/AIDS, Malaria), or increase the risk of traffic related accidents?	Yes		So far, Kovid-19 continues to be replicated. There will be minor impact on workers so required that to comply with the Department of Infectious Diseases of the Ministry of Health on Covid-19 regulations and self-defense policies.
6	<u>Child Labor</u> Involve the use of child labor or lead to increased child delinquency (school drop-outs) or child abuse.		No	
7	<u>Gender Equality</u> Likely to directly or indirectly increase gender inequalities or gender-based violence?	Yes		Sometimes there is discrimination against women worker in the workplace, but the need to build teamwork is related to gender equality, considering the inclusion of women's ideas and the absence of Sexual Harassment (SH).
8	<u>Disadvantaged or Vulnerable Individuals or</u>		No	

Will the activity or any of its associated activities?		Yes	No	Explanation
	<u>Groups</u> Lead to any risks and impacts on, individuals or groups who, because of their particular circumstances, may be disadvantaged or vulnerable, as defined below.			
9	<u>Grievance Redress Mechanism (GRM)</u>	Yes		The Grievance Redress Mechanism (GRM) could be applied and disseminated to the AC member and villager who will complaint about the activities affected by road rehabilitation to the community.
10	<u>Associated Facility</u> Does the project have any associated facilities		No	
11	<u>Unexploded Ordinance (UXO)</u> Is there potential history or occurrence of unexploded ordinance or land mines? (If the proposed area has potential land mind risk, please coordinate with UXO specialist consultant for the chance find procedures).		No	
12	<u>Labor Influx</u> Is there a potential for the activity to result in workers moving into the project area in search of employment?		No	
13	<u>Conflict</u> Is the proposed activity in a conflict zone?		No	

Section 4 – Summary of the due diligence findings

Type of ES instruments required for the proposed subproject:

- ESCoP
 Site specific ESMP

Finding Summary:

In summary, the location of the Laterite road rehabilitation of Umkhoung Agricultural Cooperative is the existing road location in Srae Krasang and Kaoh Sampeay Commune. The majority of identified environmental impact screening as not significant impacts for environment and social aspect due to the existing road location has no sensitive receptors surrounding that place.

Section 5 - Certification

We certify that we have thoroughly examined all the potential adverse effect of this activity. To the best of our knowledge, the activity will follow the ESCoPs and will prepare the additional plans (such as site specific ESMP) as per ESMF guidance, to avoid or minimize all adverse environmental, social and health impacts.

Prepared by:



Signature:

Name: Te Rithy

Position: National Social Safeguard Supervision Consultant

Contact: Phone/Telegram: +855 12 758 003; Email: (tritthy.2010@gmail.com)

Date: 22 Feb 2023

Evaluated by:



Signature:

Name: Hong Sophea

Position: National Environmental Safeguard Supervision Consultant

Contact: +855 12 518 109; Email: (hongsophea@yahoo.com)

Date: 23 Feb 2023

Approved by:



Signature:

Name: Ith Chumnan

Position: Chief of Safeguard

Contact: 012 44 54 58, Email : ith.chumnan@gmail.com

Date: 24 Feb 2023

Annex 2: Minute of consultation meeting

The following meeting minute is prepared in collaboration with project affected people, project vicinity, and local authority of the project area for ESCoP preparation

ព្រះរាជាណាចក្រកម្ពុជា

ជាតិ សាសនា ព្រះមហាក្សត្រ

323

កំណត់ហេតុ

ស្តីពី

**ការពិនិត្យអំពីតម្រូវការនៃការសិក្សារៀបចំក្រុមប្រតិបត្តិបរិស្ថាន(ESCoP) និងរៀបចំសិក្សាផលប៉ះពាល់ដីធ្លី
របស់អនុគម្រោងកែលម្អផ្លូវក្រាលក្រសក្រហមមួយខ្សែនៅក្នុងសំណើពិពិធកម្មកសិកម្ម
របស់គម្រោងCASDPឆ្នាំ២០២២**

២០-២៤

ឆ្នាំខាលចត្វាស័ក ព.ស ពីរពាន់ប្រាំរយហុកសិបប្រាំមួយ ខែមោឃ ថ្ងៃចន្ទ មួយរោច ត្រូវនឹងឆ្នាំពីរពាន់ម្ភៃពីរខែ
ឧសភាថ្ងៃទីប្រាំមួយ វេលាម៉ោងប្រាំបួនព្រឹក នៅសាលាឃុំកោះសំពាយ ស្រុកសៀមបូក ខេត្តស្ទឹងត្រែង មានបើកអង្គ
ប្រជុំផ្សព្វផ្សាយមួយស្តីពីការអនុវត្តអនុគម្រោងកែលម្អផ្លូវក្រាលក្រសក្រហមមួយខ្សែ ក្រោមអធិបតីភាពលោក ពក ជំនោរ
ជាមេឃុំកោះសំពាយ និងជាប្រធានអង្គប្រជុំ រួមជាមួយលោក ជិន ណារ៉េត ប្រធានសហគមន៍កសិកម្មអ៊ីយ៉ុងរុងរៀង។

I- សមាសភាពចូលរួម (ផ្តល់មានភ្ជាប់ក្នុងបញ្ជីវត្តមាន)

II - របៀបវារៈនៃកិច្ចប្រជុំ

- ១- ការពិនិត្យមើលអំពីតម្រូវការនៃការសិក្សាផលប៉ះពាល់ដីធ្លីរៀបចំក្រុមប្រតិបត្តិបរិស្ថាន និងសង្គម (ESCoP)
- ២- ការពិនិត្យអំពីតម្រូវការនៃការសិក្សាផលប៉ះពាល់ដីធ្លី និងទ្រព្យសម្បត្តិផ្សេងៗលើអនុគម្រោងកែលម្អផ្លូវក្រាលក្រសក្រហមខ្សែ
- ៣- បញ្ហាផ្សេង

ជាកិច្ចចាប់ផ្តើម លោក ពក ជំនោរ បានមានមតិស្វាគមន៍ ចំពោះក្រុមការងារចុះរបស់កកម្មផ្ទះជាតិ និងសមាជិកសមាជិកានៃអង្គប្រជុំដែលបានអញ្ជើញចូលរួម និងបានមានប្រសាសន៍លើកឡើងថា៖ ថ្ងៃនេះយើងបានរៀបចំកិច្ចប្រជុំមួយដើម្បីពិភាក្សាអំពីតម្រូវការនៃការសិក្សាផលប៉ះពាល់បរិស្ថាន និងសង្គមរបស់អនុគម្រោងកែលម្អផ្លូវក្រាលក្រសក្រហមខ្សែ ក្នុងសហគមន៍អ៊ីយ៉ុងរុងរៀងសម្រាប់ឆ្នាំ២០២២ តាមសំណើលើកឡើងរបស់សហគមន៍។ លទ្ធផលនៃការចុះពិនិត្យទីតាំងគម្រោងផ្ទាល់សង្កេតឃើញថា អនុគម្រោងកែលម្អផ្លូវមួយខ្សែនៅក្នុងគម្រោងពិពិធកម្មកសិកម្មកម្ពុជា(CASDP) មានទីតាំងនៅក្នុងភូមិដំរីផុង ឃុំកោះសំពាយ ស្រុកសៀមបូក ខេត្តស្ទឹងត្រែង អាចនឹងមានផលប៉ះពាល់លើដីធ្លី រងឈើ និងដើមឈើខ្លះ ដោយសារទីតាំងអនុគម្រោងត្រូវពង្រីកទទឹងផ្លូវឱ្យបានសមស្របសម្រាប់សហគមន៍ដឹកជញ្ជូនផលិតផលក្រាបស្វាយចន្ទីទៅកាន់ទីផ្សារ។ ដូច្នេះ អាចនឹងមានផលប៉ះពាល់គិតត្រឹមលើក្បាលដីប្រជាជនជាកម្មសិទ្ធិករ ឬភោគី ឬអ្នកប្រើប្រាស់ដីធ្លីមួយចំនួន។

លោក ជិន ណារ៉េត ជាប្រធានសហគមន៍កសិកម្មអ៊ីយ៉ុងរុងរៀង បានលើកយកខ្លឹមសារសំខាន់មួយចំនួនមកបន្ថែមជូនអង្គប្រជុំមានដូចជា សិទ្ធិរបស់កម្មសិទ្ធិករ ឬភោគី ឬអ្នកប្រើប្រាស់ដីធ្លីក្នុងការទទួលបានព័ត៌មានគម្រោង ការបរិច្ចាគដីធ្លី រងឈើ ដើមឈើហូបផ្លែដោយស្ម័គ្រចិត្ត សិទ្ធិក្នុងការទទួលយកសំណងទូទាត់និងនីតិវិធីក្នុងការកាត់ដីជាដើម។

លោក ហុង សុភា ទីប្រឹក្សាផ្នែកគាំពារបរិស្ថាន បានធ្វើការពន្យល់ដល់អ្នកចូលរួមក្នុងអង្គប្រជុំអំពីមូលហេតុដែលនាំឱ្យមានផលប៉ះពាល់បរិស្ថានកើតមានឡើងដូចជា ធ្នូលីដីហុយពេលសាងសង់ សំឡេងរំខាន ស្ទះចរាចរ គ្រោះថ្នាក់កម្មករ សុវត្ថិភាពសុខភាពសាធារណៈ ប្រភពទឹក ការទន្ទ្រានលើតំបន់ប្រវត្តិសាស្ត្រ ការទន្ទ្រានលើតំបន់ប្រវត្តិវិទ្យា

កូឡូស៊ី ការបំផ្លាញគម្របរុក្ខជាតិផ្លាស់ប្តូរគុណភាពទឹកលើដីឬលំហូរទឹក ការប្រើប្រាស់ជាតិផ្ទះ សារធាតុគីមីពុលក្នុង ខ្យល់ ការបាត់បង់ព្រៃឈើ ឬសំណង់គ្រួសារជាបណ្តោះអាសន្ន ឬអចិន្ត្រៃយ៍ ។ល។

អ្នកចូលរួមទាំងអស់បានលើកឡើងថា សំណើខ្សែផ្លូវដែលបានលើកឡើងមិនមានផលប៉ះពាល់បរិស្ថានដូច បានលើកឡើងទេ ដោយសារទំហំចំណីផ្លូវចាស់ដែលរដ្ឋបានទុកមានស្រាប់មានទទឹងរហូតដល់១៥ម៉ែត្រ។ ទោះជា យ៉ាងណាក៏ដោយ នឹងមានផលប៉ះពាល់ខ្លះក្នុងអំឡុងពេលសាងសង់ ដូចជាដីហុយ សំឡេងរំខានពីគ្រឿងចក្រ គុណ ភាពខ្យល់ គុណភាពទឹក ការហូរច្រោះដី និងសុខភាពកម្មករ ដែលផលប៉ះពាល់ទាំងនេះអាចទប់ស្កាត់ និងកាត់បន្ថយ បាន។

លោក គេ វិថី ទីប្រឹក្សាផ្នែកសុវត្ថិភាពសង្គម បានលើកឡើងពន្យល់អំពីទំហំ និងផលប៉ះពាល់លើដីធ្លី និង ទ្រព្យសម្បត្តិផ្សេងៗនៅក្នុងអនុគម្រោងកែលម្អផ្លូវដោយបង្ហាញគំនូសប្លង់បច្ចេកទេសខ្សែផ្លូវដែលបានលើកស្ទើរឡើង ទទឹងខ្ពង់លើប្រវែងម៉ែត្រដីដែលត្រូវការសម្រាប់សាងសង់ប្រវែងពី១០ទៅ១២ម៉ែត្រ។ ដូច្នោះ ទីតាំងក្បាលចំការ ដី លំនៅដ្ឋាន ដើមឈើ របង និងទ្រព្យសម្បត្តិផ្សេងៗទៀត ដែលស្ថិតនៅបណ្តោយផ្លូវក្នុងទំហំទទឹង១០ទៅ១២ម៉ែត្រ គឺ ជាទីតាំងរងនូវផលប៉ះពាល់ ដែលនឹងត្រូវធ្វើការវាស់វែងលម្អិតដើម្បីប្រមូលទិន្នន័យផលប៉ះពាល់ជាក់លាក់សម្រាប់ រៀបចំរបាយការណ៍ជាក់ជូនថ្នាក់ដឹកនាំគម្រោង និងធនាគារពិភពលោកត្រួតពិនិត្យ ផ្តល់យោបល់ណែនាំ។ ក្នុងករណី ផលប៉ះពាល់ដីធ្លីក្រោម១០%នៃផ្ទៃដីសរុបទាំងអស់ដែលគ្រួសារដែលមានផលប៉ះពាល់នីមួយៗ នោះតម្រូវឱ្យបរិច្ចាគ ដោយស្ម័គ្រចិត្តដោយមិនមានការបង្ខិតបង្ខំ។ ចំពោះកិច្ចការពារសុវត្ថិភាពជនជាតិដើមភាគតិចមិនតម្រូវឱ្យមានសិក្សា នោះទេ ដោយសារទីតាំងអនុគម្រោងមិនមានជនជាតិដើមភាគតិចរស់ឡើយ។

ក្នុងអំឡុងពេលពិគ្រោះយោបល់ យន្តការដោះស្រាយវិវាទ ឬបណ្តឹងតវ៉ា(GRM)ឬ(CHM) បានលើកមក ពន្យល់ដល់អ្នកចូលរួមក្នុងការប្រើប្រាស់យន្តការនេះឱ្យមានប្រសិទ្ធភាព ដែលយន្តការនេះបានបញ្ជាក់យ៉ាងច្បាស់អំពី សិទ្ធិទាមទារសំណងរបស់ប្រជាពលរដ្ឋ យោងតាមគោលនយោបាយការពាររបស់ធនាគារពិភពលោក និងមិនមាន នរណាម្នាក់ត្រូវបានបង្ខិតបង្ខំឱ្យបរិច្ចាគដីធ្លីទៅអនុគម្រោងផ្លូវនេះទេ។

ក្រុមការងារគម្រោង និងអាជ្ញាធរមូលដ្ឋានភូមិ ឃុំ បានចុះទៅពិនិត្យទីតាំងខ្សែផ្លូវដែលបានលើកស្ទើរឡើង ដើម្បីធ្វើការវាស់វែង អង្កេតប្រមូលព័ត៌មានពីផលប៉ះពាល់បរិស្ថាន និងសង្គម និងបន្តទៅរៀបចំវិធានការទប់ស្កាត់ផល ប៉ះពាល់ដោយប្រើឧបករណ៍ក្រុមប្រតិបត្តិបរិស្ថាន និងសង្គម(ESCoP) និងរបាយការណ៍បរិច្ចាគដីធ្លីដោយស្ម័គ្រចិត្ត ឱ្យគម្រោង(VLD)។

លោក ពក ជំនោរ ជាមេឃុំកោះសំពាយ និងជាប្រធានអង្គប្រជុំ មានប្រសាសន៍លើកឡើងជម្រាបជូនអង្គប្រជុំ អំពីផលប្រយោជន៍នៃអនុគម្រោងផ្លូវមួយខ្សែដែលសហគមន៍បានស្នើឡើងនេះ នៅពេលដែលបានកែលម្អរថ្នាល់ផ្លូវ នេះនឹងបានសម្រួលដល់សមាជិកសហគមន៍ និងប្រជាជននៅក្នុងឃុំតាម៉ឺនទាំងមូលងាយស្រួលក្នុងការដឹកជញ្ជូនផល ពីចំការមកស្តុកទុកលក់ក្នុងស្នាក់ការសហគមន៍កសិកម្ម។ យោងតាមការពិនិត្យរបស់ក្រុមជំនាញឃើញថា អនុ គម្រោងនឹងមានផលប៉ះពាល់ខ្លះលើក្បាលដីប្រជាជនមួយចំនួនដែលនៅអមសងខាងផ្លូវដែលមានស្រាប់។ លោក បានបញ្ជាក់បន្ថែមថា អនុគម្រោងផ្លូវដែលអាចឈានទៅដល់ដំណាក់កាលអនុវត្តបាន លុះត្រាតែក្រុមការងារចុះវាស់ វែងបានកំណត់លើផលប៉ះពាល់ជាមុនសិន និងមានការទទួលស្គាល់ពីម្ចាស់ក្បាលដីនីមួយៗលើផលប៉ះពាល់ទាំង នោះ។ ថ្ងៃនេះ បងប្អូនបានចូលរួមទាំងអស់គ្នាបានស្តាប់នូវការផ្សព្វផ្សាយអំពីអនុគម្រោងផ្លូវទាំងពីរខ្សែនេះ និងបាន ស្តាប់ពីនីតិវិធីនៃការចុះសិក្សាផលប៉ះពាល់ដែលក្រុមជំនាញបានបង្ហាញជូន និងសហការជាមួយអាជ្ញាធរមូលដ្ឋាន ដើម្បីកំណត់ឱ្យបានច្បាស់លាស់ និងមានតម្លាភាព។ លោកបានបន្ថែមទៀតថា ក្រោយពីបញ្ចប់អង្គប្រជុំនេះទៅ ក្រុម ជំនាញនឹងមានការវាស់វែងស្រង់ទិន្នន័យផលប៉ះពាល់នៃអនុគម្រោងខ្សែនេះ បន្ទាប់ពីបានទិន្នន័យរៀបចំរួចរាល់ នឹង មានរៀបចំការប្រជុំលើកទីពីរស្តីពីកិច្ចព្រមព្រៀងបរិច្ចាគដោយស្ម័គ្រចិត្តរវាងក្រុមការងារជំនាញ ជាមួយអាជ្ញាធរដែនដី និងប្រជាជនដែលមានផលប៉ះពាល់ដើម្បីសម្រេចទាំងអស់គ្នា។

បន្ទាប់ពីបានពិភាក្សាគ្នាយ៉ាងល្អិតល្អន់រួចមក លោកមេឃុំបានពិនិត្យ និងសម្រេចឱ្យមានការសិក្សាដីធ្លី ស្រប
តាមគោលការណ៍ណែនាំដែលបានកំណត់។


អង្គប្រជុំបានបញ្ចប់នៅម៉ោងដប់មួយនិងសាមសិបនាទីព្រឹក នាថ្ងៃខែឆ្នាំដដែលក្រោមបរិយាកាសវិករាយ និង
ស្ថិរស្ថាលក្រែលែង។

បានឃើញ និងឯកភាព

មេឃុំអង្គប្រជុំ

ពក ជិនោន

អ្នកធ្វើកំណត់ហេតុ


១២/១១/២០២៤

Annex 3 : Attendants of consultation Meeting

The laterite road rehabilitation Sob-project of Agricultural Cooperative in Umkhong Rungreung in Srae Krasang Commune, Siem Bouk District, Stung Treng Province

ព្រះរាជាណាចក្រកម្ពុជា
ជាតិ សាសនា ព្រះមហាក្សត្រ

បណ្ឌិតសភា

កិច្ចប្រជុំស្តីពី ការវិនិយោគសាងសង់ និង ថែទាំ ផ្លូវល្បែងស្រូវ ក្នុង ភូមិ គ្រប់ ភូមិ ក្នុង ក្រុមប្រឹក្សាភិបាល កសិកម្ម រុក្ខាប្រមាញ់ និង ត្រីប្រមាញ់

ភូមិ: គ្រប់ ភូមិ ឃុំ: ស្រែក្រវាត់ ក្រុមប្រឹក្សាភិបាល កសិកម្ម រុក្ខាប្រមាញ់ និង ត្រីប្រមាញ់ ខេត្ត: ឧត្តរមានជ័យ

ថ្ងៃទី: 20 ខែ កុម្ភៈ ឆ្នាំ 2023

ល.រ	គោត្តនាម-នាម	ភេទ	មុខងារ	អង្គការ/ភូមិ	ជនជាតិដើម ភាគតិច	ស្ថានភាពគ្រួសារ (ក្រីក្រ, ក្រប, មធ្យម, ធូលី)	លេខទូរស័ព្ទ	ហត្ថលេខា/ស្នាមមេដៃ
01	ម៉ៅ ជី	ប	កសិករ	គ្រប់ ភូមិ	ក្រ	មធ្យម		
02	ឡាន ស៊ីសុវណ្ណ	ស	កសិករ	គ្រប់ ភូមិ	ខ្មែរ	មធ្យម		
03	វណ្ណ ហង់	ប	កសិករ	គ្រប់ ភូមិ	ខ្មែរ/កម្ពុជា	មធ្យម		
04	ក្រីក្រ ហង់	ប	កសិករ	គ្រប់ ភូមិ	ខ្មែរ/កម្ពុជា	មធ្យម		
05	ឡាន ហង់	ស	កសិករ	គ្រប់ ភូមិ	ខ្មែរ/កម្ពុជា	មធ្យម		
06	លី វណ្ណ	ស	កសិករ	គ្រប់ ភូមិ	ខ្មែរ/កម្ពុជា	មធ្យម		
07	ក្រុមប្រឹក្សាភិបាល កសិកម្ម រុក្ខាប្រមាញ់ និង ត្រីប្រមាញ់				ខ្មែរ	មធ្យម	097294467	
08	ឡាន ហង់	ប	កសិករ	គ្រប់ ភូមិ	ខ្មែរ	មធ្យម	0979544585	
09	វណ្ណ ហង់	ប	កសិករ	គ្រប់ ភូមិ	ខ្មែរ	មធ្យម	0977959249	
10	វណ្ណ ហង់	ប	កសិករ	MAFF-PCO	ខ្មែរ	- ក -		
11	វណ្ណ ហង់	ប	កសិករ	MAFF-PCO	ខ្មែរ	មធ្យម	0487375663	
12	វណ្ណ ហង់	ប	កសិករ	MAFF-PCO	ខ្មែរ	មធ្យម	0314449203	
13	វណ្ណ ហង់	ប	កសិករ	MAFF-PCO	ខ្មែរ	- ក -	012758009	TRIS

